

Bassenthwaite Lake

National Nature Reserve

5 kilometres long (3.1 miles)
1 kilometre at its widest (0.62 miles)
19 metres at its deepest (62.4 feet)

Using the lake

Boat, canoe or sailboard users

There is no right of navigation on Bassenthwaite Lake. You must have a permit to take any craft onto the lake. Please respect the no boating zones. These protect the most important sites for breeding and over-wintering birds. Canoeing from the River Derwent? Please pass through the no boating zone as quickly and quietly as possible, keeping along the east shore. You can then leave the lake at Peel Wyke or Blackstock Point.



Heron

Anglers

- You need a valid lake permit and an Environment Agency (EA) rod licence – maximum two rods per permit.
- Season lake permits are available.
- Please use sea dead bait or artificial lures. All current EA byelaws apply. Freshwater live and dead bait are banned.
- To protect wildlife, please take unwanted tackle home and dispose of it safely.
- Use non toxic alternatives to illegal lead shot.
- Do not trample lakeshore vegetation.
- Overnight stays and camping are not allowed. They damage the sensitive lake shore habitats.
- Most of the lake shore is privately owned. You need the landowner's permission for access.

Licences and permits

For more on sailing, rod licences, permits and fishing permits, and other places where you can go to fish, use a boat or watch wildlife, contact Keswick Information Centre on 0845 901 0845.

Greener boating

- **Check, Clean and Dry** your equipment before you come to help stop the spread of invasive species
- Check bilges and engines for spills and oil leaks
- Check toilets have sealed holding tanks

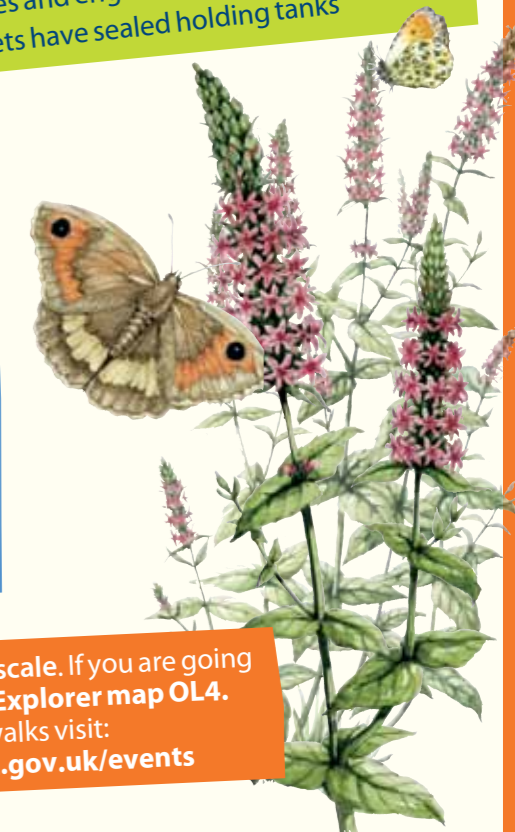
How YOU can help

Please keep to the rights of way. Trampling quickly destroys plant habitats. Remember to remove all vegetation and plant remains from your boat, equipment and tackle before you leave the lake.

The Shore

a haven for plants and insects

Open water, woodland, swamp and fen, and marshy grassland, create a refuge for rare plants such as globeflower, purple loosestrife and betony. These in turn, are home to specialised insects including butterflies and a snail eating fly!



Walking

This map is not to scale. If you are going for a walk take **OS Explorer map OL4**. For great guided walks visit: www.lakedistrict.gov.uk/events

Lake information

useful contacts

Local rangers 017687 79633
LDNPA office, Kendal 01539 724555
Information Centre
Moot Hall, Keswick 0845 901 0845
Public transport
Traveline 0871 200 22 33
Or ask at Tourist Information Centres
Weather
Forecast available 0844 846 2444
on Weatherline
www.lakedistrictweatherline.co.uk

It is the responsibility of every lake user to read and understand the Bassenthwaite Byelaws. They are displayed on the reverse of the National Park information panels around the lake.



Key

- Public open access land
- Public footpath
- Roadside footpath
- Footpath to viewing points
- Private shoreline
- WC Toilet
- P Car park
- Telephone
- Bird hide
- Forest and woodland
- Sailing in this area is reserved for Bassenthwaite Sailing Club
- No boating zone



For lake rescue services dial **999** and ask for the coastguard

Contains Ordnance Survey data
© Crown copyright and database right 2014