

## THE APPROACH AND PROPOSED PROGRAMME OF VALLEY PLANNING IN THE NATIONAL PARK

### 1 SUMMARY

- 1.1 This report summarises the discussion at the Valley Planning and Land Management sub-group (VP & LMSG) meeting on the 9 June 2014 on an approach and programme for the roll out of Valley Planning across the National Park.

<p><b><i>Recommendation a Endorses the recommendations made on the approach and that the Partnership: programme for the roll out of valley across the National Park.</i></b></p>
--

### 2 BACKGROUND

- 2.1 In March 2014 the Partnership agreed that valley planning was an effective mechanism for delivering the Partnership Plan Vision and the effective identification and management of the National Park Special Qualities (SQs) at a local level. Therefore a programme for valley planning should be established across the National Park.
- 2.2 Valley Plans have been recognised by the Department of Culture, Media and Sport (DCMS) and the United Nations Educational, Scientific and Cultural Organisation (UNESCO) as the mechanism for delivering the Lake District World Heritage Site Management Plan at a local level. In March 2014 the Partnership agreed that a new valley plan be produced for Grasmere (Rydal, Ambleside) and that the reviewed Ullswater Plan be completed by March 2015 to contribute to the inscription application of the Lake District World Heritage Site in June 2015.
- 2.3 In order to ensure the delivery of the above, Partners will work together, with local valley communities and businesses, to produce valley plans for all 13 valleys identified in the National Park: Bassenthwaite & Borrowdale, Buttermere, Coniston, Duddon, Emmerdale, Eskdale, Grasmere (Rydal, Ambleside), Haweswater, Langdale, Thirlmere, Ullswater, Wasdale and Windermere. A map of the 13 valleys can be seen in **Annex 1**.

### 3.0 THE APPROACH TO VALLEY PLANNING

- 3.1 The new Partnership's Plan for 2015-2020, as the combined management plan for the lake district as a national park and a proposed world heritage site, will include the Vision and vision theme outcomes as well as establishing a park wide approach for the management of the SQs. The intention is for this approach to be further illustrated geographically at a Distinctive Area level. Valley plans will then interpret the Partnership's Plan at a local scale, giving further strategic consideration to local issues, aspirations and establishing an action plan to make this a reality.
- 3.2 In order to ensure partner commitment to the roll out of valley planning the VP & LMSG were asked the following:

- To agree on a proposed programme and commit resource to the roll out of valley planning across the National Park until the financial year 2018/19. The proposed programme is included in **Annex 2**. The proposed programme is based on our current awareness of available Lake District National Park Authority (LDNPA) resources, current management activity and local opportunities.
- To agree to commit resources to form a dedicated network team to work with the Ullswater Steering Group to review and deliver the existing Ullswater Valley Plan.
- To agree to commit resource to form a dedicated network team to engage with local communities to produce and deliver a Grasmere/Rydal/Ambleside Valley Plan.

#### **4.0 FINANCIAL CONSIDERATIONS**

- 4.1 Cost has so far been related to staff time attributed to the planning and delivery of the valley planning process and production of a valley plan. There will be costs related to hiring venues, catering and equipment. Where necessary skills and resources can be utilised from partner resources but it may be necessary to buy in independent facilitation. Therefore Partners need to consider the pooling of funds to resource this area of work.
- 4.2 For the roll out of valley planning to be successful commitment from partners prior to community engagement is essential. This will be achieved through the creation of valley network teams. The initial purpose of the teams will be to produce a comprehensive framework for community engagement, and identify key Partner priorities in the context of the SQs, World Heritage Site attributes and local issues in each valley area.

#### **5.0 RECOMMENDATIONS**

- 5.1 The proposed programme for rolling out valley planning in **Annex 2** will be supported by a clear rationale behind the order of valley plan production. The VP & LMSG acknowledged that this programme remained flexible to consider future opportunities and factors that may affect partner resources for any given valley.
- 5.2 The formation of network teams has been accepted as a mechanism for providing a strategic approach to valley planning. The teams will provide a framework for community engagement based on:
- Valley scale, sustainable management priorities, for the SQs of the National Park:
  - Environmental, social and economic benefits for the valley communities.
  - The conservation of cultural heritage.
  - The commitment of resources required to both support and finance the valley planning process.

In addition the framework for community engagement developed by the network teams will require some form of validation, pre engagement, through a ground truthing exercise, to ensure community support and buy in to the process.

- 5.3 Partners will be required to commit to resourcing network teams to ensure they deliver the 3 elements of valley planning over the next 5 years and ultimately beyond:
- Production of a valley plan – 2014 – 2019
  - Review of the existing plans (produced between 2014 and 2018) – 2019/2020
  - Implementation of the valley plans – 2014 onwards

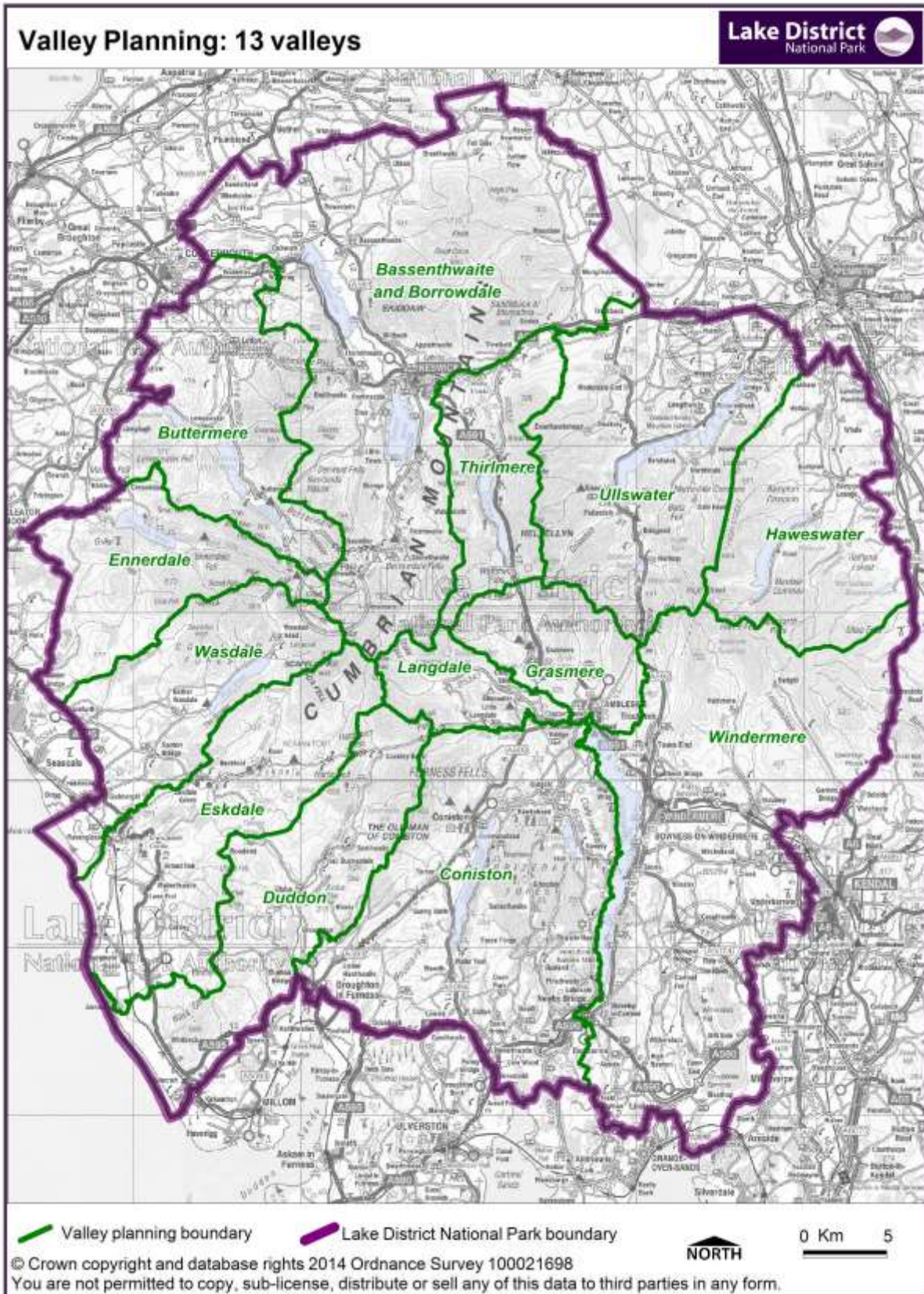
**Background papers:**

Partnership Papers 10 March 2014:7a: Ullswater Valley Planning review and lessons learnt; and 7c: Valley Planning Roll Out

**Author/Post:** Jack Ellerby, Chair of VP and LMSG and Cath Johnson, Working Together Project Leader. LDNPA

**Date Written:** 11 June 2014

Annex 1



**Annex 2**

	<b>DISTINCTIVE A AREAS</b>				
<b>Financial Year</b>	<b>North</b>	<b>East</b>	<b>Central &amp; South East</b>	<b>South</b>	<b>West</b>
<b>2014/15</b>		Ullswater (review)	Grasmere	-	-
<b>2015/16</b>	Bassenthwaite / Borrowdale	-	Langdale	-	Wasdale
<b>2016/17</b>	Thirlmere		-	Coniston	Eskdale
<b>2017/18</b>	-	Haweswater	Windermere	-	Duddon
<b>2018/19</b>	Buttermere	-	-	-	Ennerdale
<b>2019/20</b>	<b>Period of review of Partnership Plan</b>				