

Windows

What drawings do I need to include with my planning application?

Introduction

Windows are an important part of the character of many Lake District buildings. To maintain the character of the Lake District's acclaimed historic environment sometimes we will require that certain types of window are retained, or that new windows are of a particular material and detail. In some places, for example Conservation Areas and the Keswick Article 4 Direction Area, if replacing your windows requires a planning application we will insist that windows meet certain requirements, for example we may insist on timber units. Where an application is needed, for us to properly understand and consider a proposal, we need submissions to include a minimum level of detail. It is important that an application clearly shows two things: which windows are to be replaced; what the proposed windows will look like.

How do I identify the windows to be replaced?

Ideally you will provide plans of all the elevations of the building, clearly identifying the windows to be replaced.

What information do I need to provide about the new windows?

For us to properly understand what your proposed windows will look like, you will need to provide drawings showing the details of the proposed windows. You should provide the following details:

- Drawing showing the proposed glazing pattern for each new window - see figure 1 for an example.
- Large scale horizontal sections typical of each proposed window type - see figure 2 for an example.
- Large scale vertical sections typical of each proposed window type - see figure 3 for an example.
- Large scale drawings of any specific details, such as glazing bars, beading, or the spacing between panes of glass - see figure 4 for an example.

Your agent, joiner or window manufacturer should be able to provide you with these details.

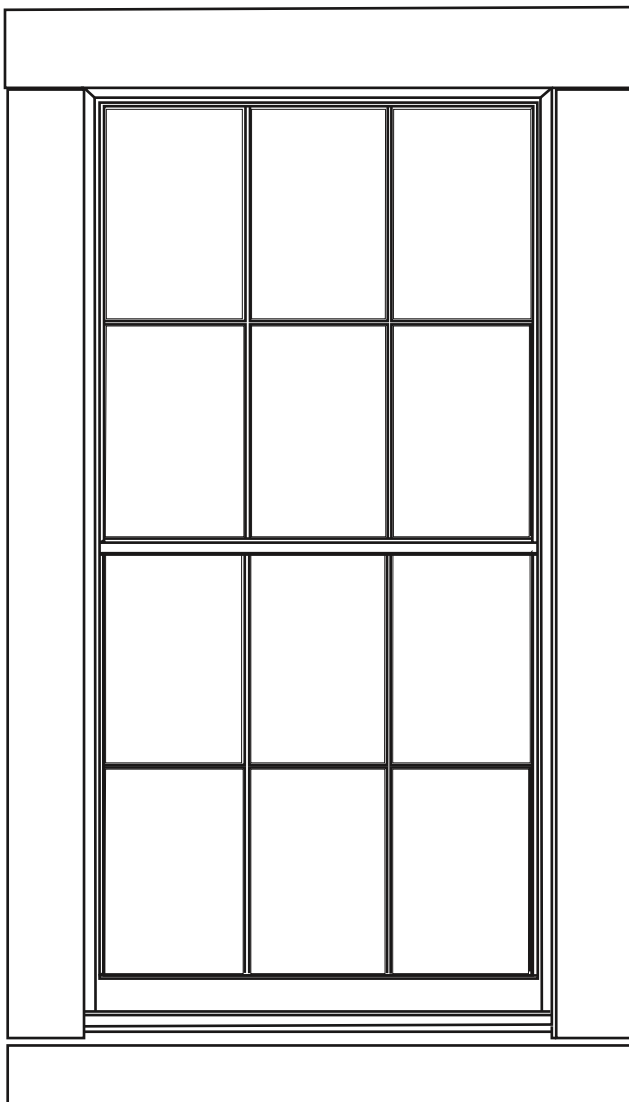


Figure 1 (1:20 Scale)
Elevation of Typical Sash Window

Example drawings

These drawings shows the details of a double glazed, timber built, Georgian style sash window.

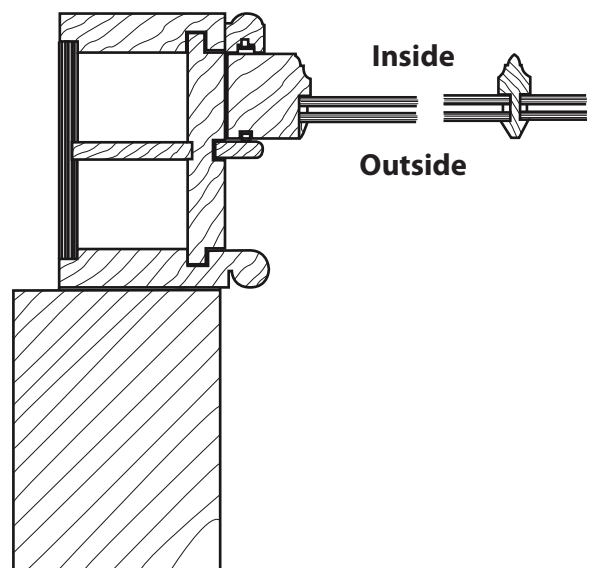
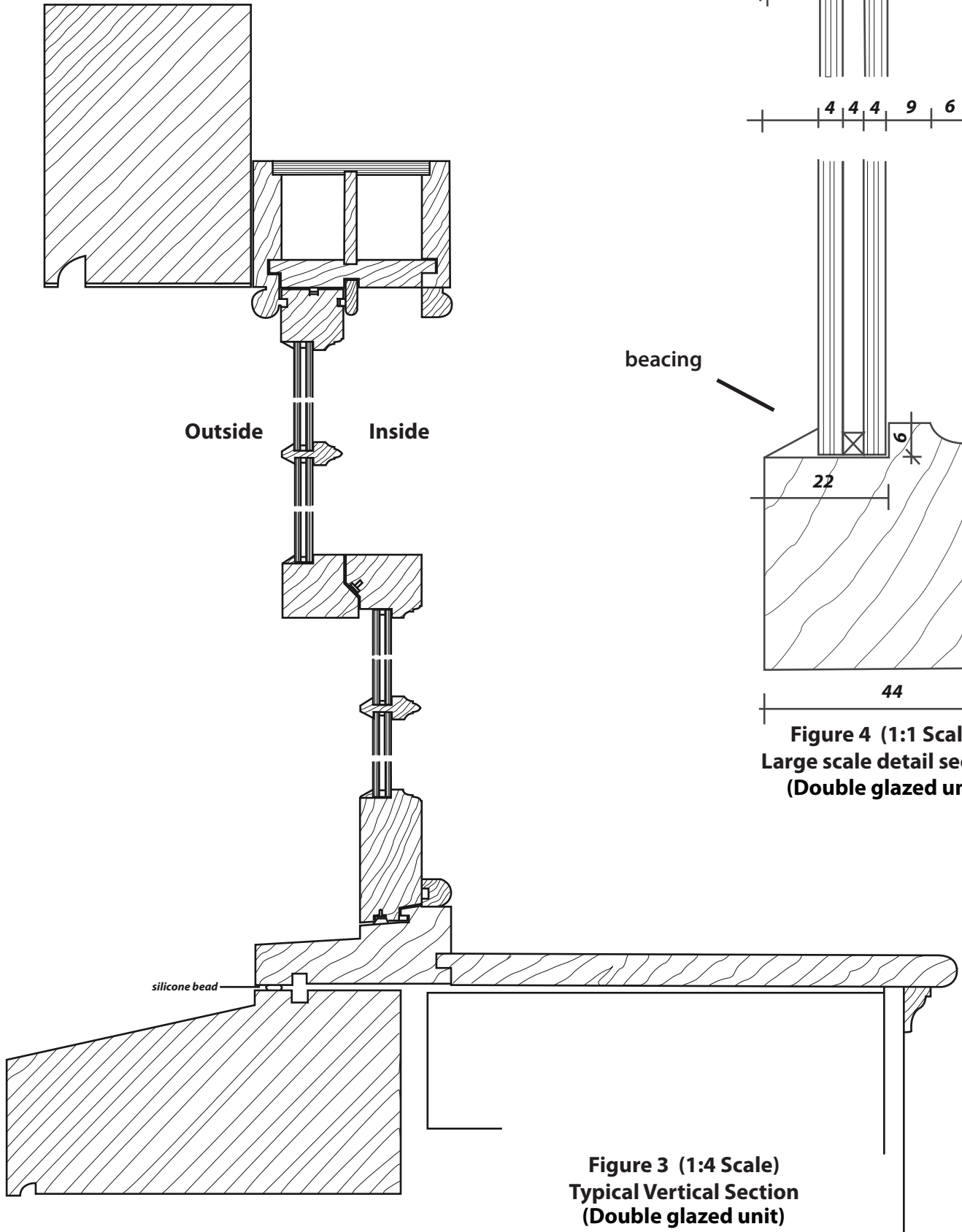
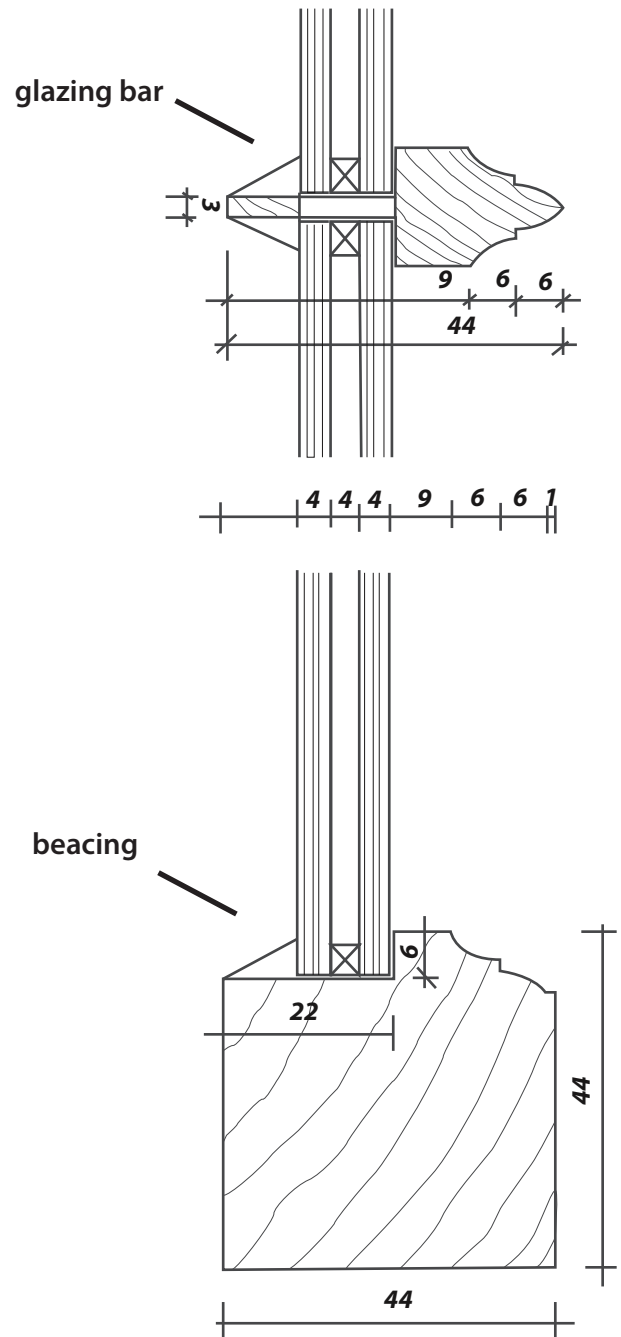


Figure 2 (1:4 Scale)
Typical Horizontal Section
(Double Glazed Unit)



**Figure 3 (1:4 Scale)
Typical Vertical Section
(Double glazed unit)**



**Figure 4 (1:1 Scale)
Large scale detail section
(Double glazed unit)**

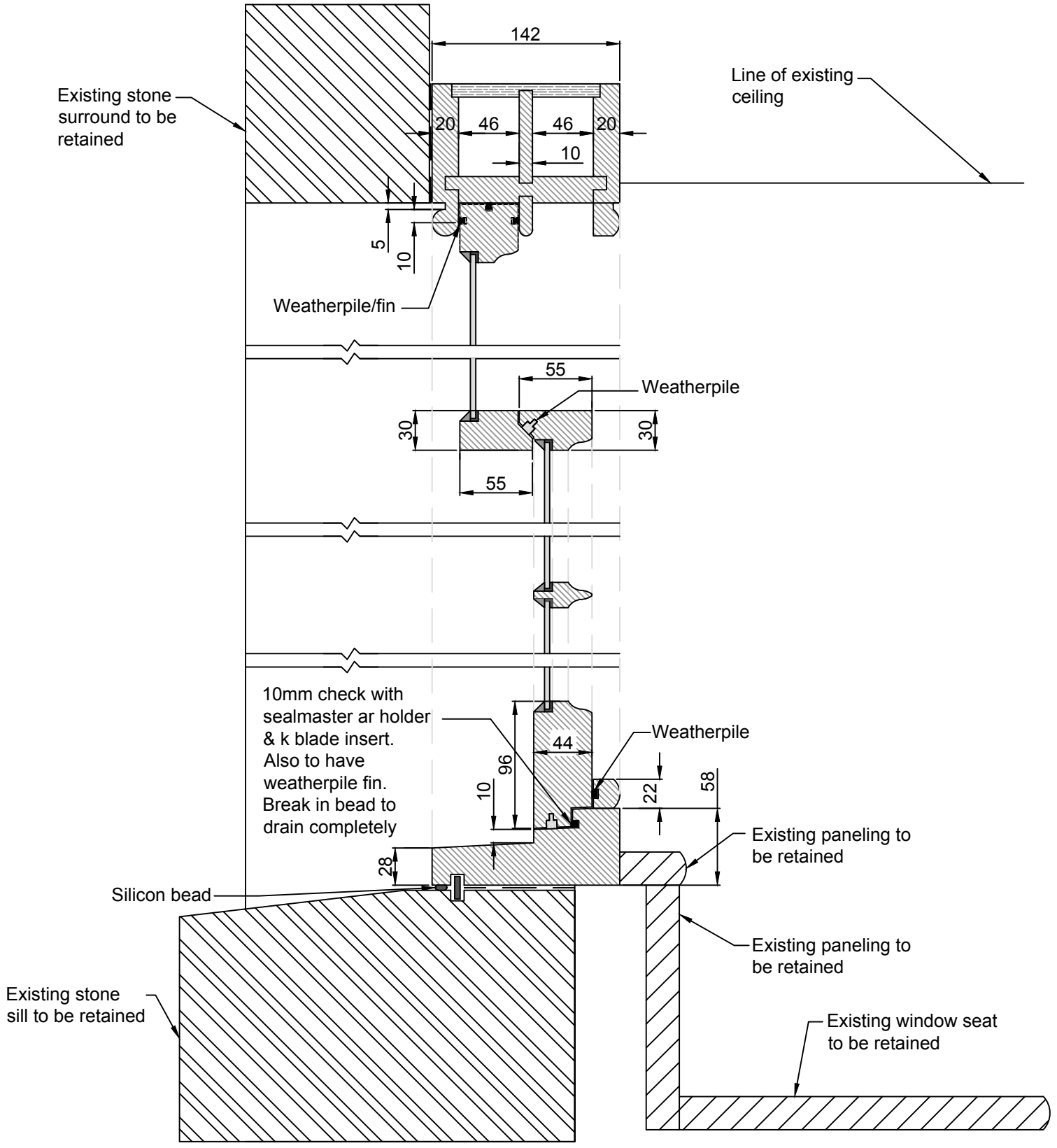


Figure 6 (Scale 1:4)
Typical Vertical Section
Single Glazed Unit)

Contact us

Lake District National Park Authority
Murley Moss Business Park
Oxenholme Road
Kendal
LA9 7RL

Telephone: 01539 724555
Fax: 01539 740822
Minicom: 01539 792690
Email: hq@lakedistrict.gov.uk
www.lakedistrict.gov.uk

For specific conservation advice, including advice about listed buildings, you can contact our Conservation and Design Officer.

A duty planning officer is available Monday to Friday between 9.30am and 12.30pm to talk to either by phone or in person at our Kendal offices. We also run planning surgeries in Keswick, Glenridding and Gosforth where you can meet an officer in person. Please see our website or call us for details of surgery times and locations.